

**MATERIAL**Die-cast zinc alloy **ZD**

Epoxy resin coating:

- Black, RAL 9005, textured finish **SW**
- Grey, RAL 9006, matte finish **SR**



Housing for DIN 6885-1 keyway

- P9 for execution GN 210-K
- JS9 for execution GN 210-KK

**CAP**

Polyamide (PA)



- Removable
- Black colour for **SW**
- Grey colour for **SR**

**STANDARD EXECUTIONS**

- **GN 210-B**: without housing for keyway, without locking.
- **GN 210-BK**: without housing for keyway, with locking.
- **GN 210-K**: with housing for keyway, without locking.
- **GN 210-KK**: with housing for keyway, with locking.
- **GN 210-V**: with double square hole, without locking.
- **GN 210-VK**: with double square hole, with locking.

**CYLINDER HEAD SCREWS ISO 4762**

For hole in executions GN 210-BK, GN 210-KK, GN 210-VK

Stainless steel

**FEATURES AND APPLICATIONS**

GN 210 operating levers are used to operate shafts, for example for changing gears, engaging clutches or operating valves and locks.

The torque is transmitted through a geometric coupling with a parallel tongue or square shaft. This ensures a precise angular position between the shaft and the lever. The angular position can be freely defined using control levers with a smooth bore.

Levers with a tab slot or square hole can be secured axially with a countersunk washer.

The locking versions transmit torques and forces without backlash via friction locking and fix the hub axially. They are easy to install and can be adjusted even after installation.

The rotation angle of the operating levers can be maintained with ball and spring pressers or limited with end stop pins.



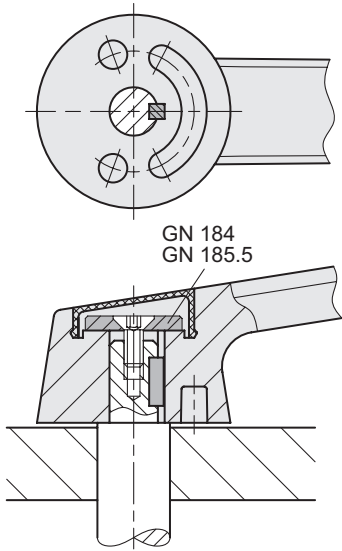


Clamping and torque transmission

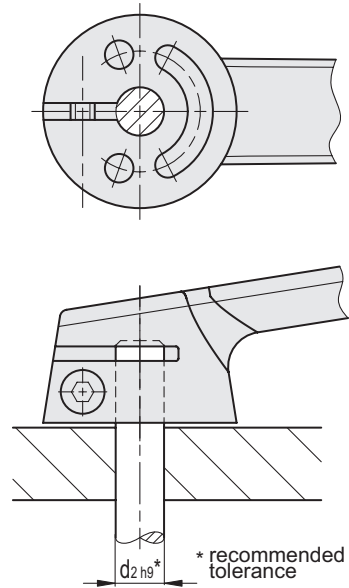
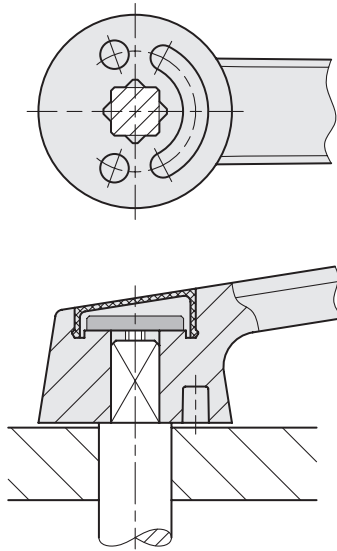
Countersunk washer and parallel keyway

Countersunk washer and square shaft

With locking



GN 184
GN 185.5

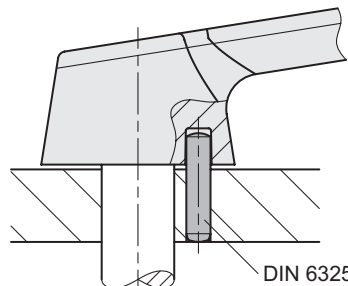
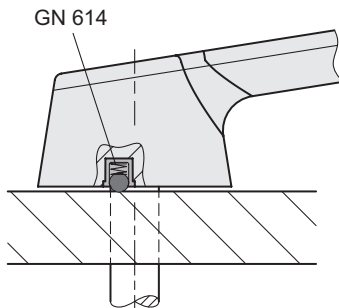
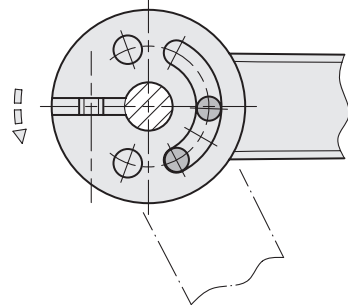
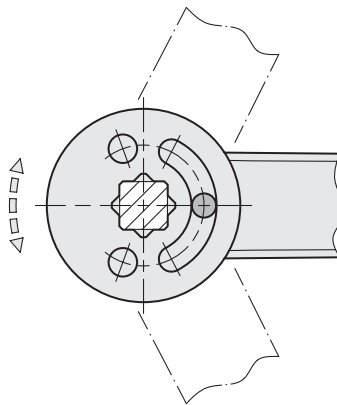
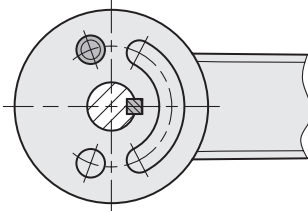


Engagement/Limit of rotation

Limit pins in the groove

Spring plunger

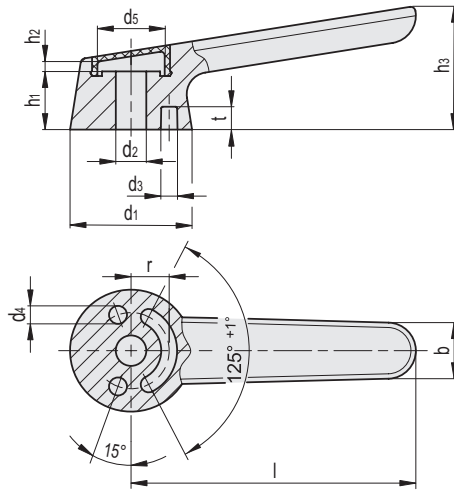
Two limit pins in the groove



- 1
- 2
- 3
- 4
- 5
- 6
- 7
- 8
- 9
- 10
- 11
- 12
- 13
- 14
- 15
- 16
- 17
- 18
- 19

Control elements

- 1
- 2
- 3
- 4
- 5
- 6
- 7
- 8
- 9
- 10
- 11
- 12
- 13
- 14
- 15
- 16
- 17
- 18
- 19



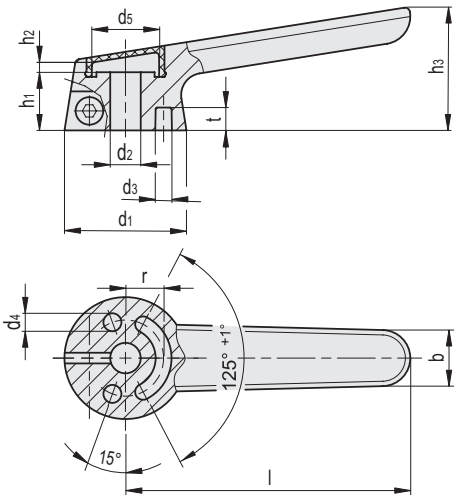
METRIC

GN 210-B

| Code | Description | d1 | l | d2 H7 | b | t | h1-0.2 | h2 | h3 | d3+0.2 | d4 | d5 | r | |
|----------|-----------------------|----|------|-------|------|-----|--------|-----|----|--------|----|------|------|-----|
| GN.80471 | GN 210-32-B8-N-ZD-SR | 32 | 91.5 | 8 | 15 | 6 | 14.9 | 3.4 | 36 | 4.2 | 4 | 18.8 | 10 | 120 |
| GN.80472 | GN 210-32-B8-N-ZD-SW | 32 | 91.5 | 8 | 15 | 6 | 14.9 | 3.4 | 36 | 4.2 | 4 | 18.8 | 10 | 120 |
| GN.80475 | GN 210-32-B10-N-ZD-SR | 32 | 91.5 | 10 | 15 | 6 | 14.9 | 3.4 | 36 | 4.2 | 4 | 18.8 | 10 | 120 |
| GN.80476 | GN 210-32-B10-N-ZD-SW | 32 | 91.5 | 10 | 15 | 6 | 14.9 | 3.4 | 36 | 4.2 | 4 | 18.8 | 10 | 120 |
| GN.80531 | GN 210-40-B10-N-ZD-SR | 40 | 114 | 10 | 18.5 | 7.5 | 19.1 | 2.8 | 44 | 5.2 | 5 | 23.6 | 12.5 | 232 |
| GN.80532 | GN 210-40-B10-N-ZD-SW | 40 | 114 | 10 | 18.5 | 7.5 | 19.1 | 2.8 | 44 | 5.2 | 5 | 23.6 | 12.5 | 232 |
| GN.80535 | GN 210-40-B12-N-ZD-SR | 40 | 114 | 12 | 18.5 | 7.5 | 19.1 | 2.8 | 44 | 5.2 | 5 | 23.6 | 12.5 | 232 |
| GN.80536 | GN 210-40-B12-N-ZD-SW | 40 | 114 | 12 | 18.5 | 7.5 | 19.1 | 2.8 | 44 | 5.2 | 5 | 23.6 | 12.5 | 232 |
| GN.80591 | GN 210-50-B12-N-ZD-SR | 50 | 142 | 12 | 23 | 9 | 23.6 | 4 | 55 | 6.2 | 6 | 30.5 | 16 | 455 |
| GN.80592 | GN 210-50-B12-N-ZD-SW | 50 | 142 | 12 | 23 | 9 | 23.6 | 4 | 55 | 6.2 | 6 | 30.5 | 16 | 455 |
| GN.80595 | GN 210-50-B14-N-ZD-SR | 50 | 142 | 14 | 23 | 9 | 23.6 | 4 | 55 | 6.2 | 6 | 30.5 | 16 | 455 |
| GN.80596 | GN 210-50-B14-N-ZD-SW | 50 | 142 | 14 | 23 | 9 | 23.6 | 4 | 55 | 6.2 | 6 | 30.5 | 16 | 455 |

Conversion Table
1 mm = 0.039 inch

| d1 | |
|----|------|
| mm | inch |
| 32 | 1.25 |
| 40 | 1.56 |
| 50 | 1.95 |

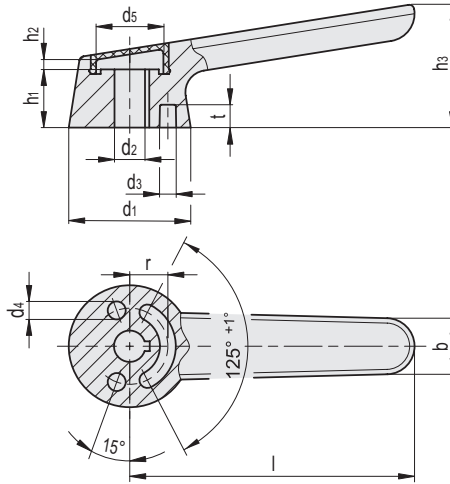


METRIC

GN 210-BK

| Code | Description | d1 | l | d2 H7 | b | t | h1-0.2 | h2 | h3 | d3+0.2 | d4 | d5 | r | MA max [Nm] | |
|----------|------------------------|----|------|-------|------|-----|--------|-----|----|--------|----|------|------|-------------|-----|
| GN.80481 | GN 210-32-BK8-N-ZD-SR | 32 | 91.5 | 8 | 15 | 6 | 14.9 | 3.4 | 36 | 4.2 | 4 | 18.8 | 10 | 2.9 | 117 |
| GN.80482 | GN 210-32-BK8-N-ZD-SW | 32 | 91.5 | 8 | 15 | 6 | 14.9 | 3.4 | 36 | 4.2 | 4 | 18.8 | 10 | 2.9 | 117 |
| GN.80485 | GN 210-32-BK10-N-ZD-SR | 32 | 91.5 | 10 | 15 | 6 | 14.9 | 3.4 | 36 | 4.2 | 4 | 18.8 | 10 | 2.9 | 117 |
| GN.80486 | GN 210-32-BK10-N-ZD-SW | 32 | 91.5 | 10 | 15 | 6 | 14.9 | 3.4 | 36 | 4.2 | 4 | 18.8 | 10 | 2.9 | 117 |
| GN.80541 | GN 210-40-BK10-N-ZD-SR | 40 | 114 | 10 | 18.5 | 7.5 | 19.1 | 2.8 | 44 | 5.2 | 5 | 23.6 | 12.5 | 5.7 | 229 |
| GN.80542 | GN 210-40-BK10-N-ZD-SW | 40 | 114 | 10 | 18.5 | 7.5 | 19.1 | 2.8 | 44 | 5.2 | 5 | 23.6 | 12.5 | 5.7 | 229 |
| GN.80545 | GN 210-40-BK12-N-ZD-SR | 40 | 114 | 12 | 18.5 | 7.5 | 19.1 | 2.8 | 44 | 5.2 | 5 | 23.6 | 12.5 | 5.7 | 229 |
| GN.80546 | GN 210-40-BK12-N-ZD-SW | 40 | 114 | 12 | 18.5 | 7.5 | 19.1 | 2.8 | 44 | 5.2 | 5 | 23.6 | 12.5 | 5.7 | 229 |
| GN.80601 | GN 210-50-BK12-N-ZD-SR | 50 | 142 | 12 | 23 | 9 | 23.6 | 4 | 55 | 6.2 | 6 | 30.5 | 16 | 10 | 449 |
| GN.80602 | GN 210-50-BK12-N-ZD-SW | 50 | 142 | 12 | 23 | 9 | 23.6 | 4 | 55 | 6.2 | 6 | 30.5 | 16 | 10 | 449 |
| GN.80605 | GN 210-50-BK14-N-ZD-SR | 50 | 142 | 14 | 23 | 9 | 23.6 | 4 | 55 | 6.2 | 6 | 30.5 | 16 | 10 | 449 |
| GN.80606 | GN 210-50-BK14-N-ZD-SW | 50 | 142 | 14 | 23 | 9 | 23.6 | 4 | 55 | 6.2 | 6 | 30.5 | 16 | 10 | 449 |

Control elements



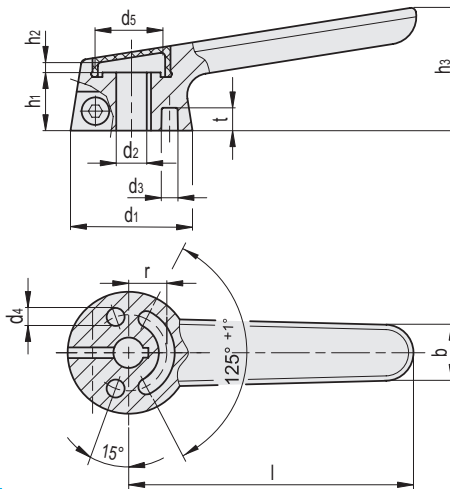
GN 210-K

METRIC

| Code | Description | d1 | l | d2 H7 | b | t | h1 -0.2 | h2 | h3 | d3 +0.2 | d4 | d5 | r | ⚖ |
|----------|-----------------------|----|------|-------|------|-----|---------|-----|----|---------|----|------|------|-----|
| GN.80491 | GN 210-32-K8-N-ZD-SR | 32 | 91.5 | 8 | 15 | 6 | 14.9 | 3.4 | 36 | 4.2 | 4 | 18.8 | 10 | 119 |
| GN.80492 | GN 210-32-K8-N-ZD-SW | 32 | 91.5 | 8 | 15 | 6 | 14.9 | 3.4 | 36 | 4.2 | 4 | 18.8 | 10 | 119 |
| GN.80495 | GN 210-32-K10-N-ZD-SR | 32 | 91.5 | 10 | 15 | 6 | 14.9 | 3.4 | 36 | 4.2 | 4 | 18.8 | 10 | 119 |
| GN.80496 | GN 210-32-K10-N-ZD-SW | 32 | 91.5 | 10 | 15 | 6 | 14.9 | 3.4 | 36 | 4.2 | 4 | 18.8 | 10 | 119 |
| GN.80551 | GN 210-40-K10-N-ZD-SR | 40 | 114 | 10 | 18.5 | 7.5 | 19.1 | 2.8 | 44 | 5.2 | 5 | 23.6 | 12.5 | 232 |
| GN.80552 | GN 210-40-K10-N-ZD-SW | 40 | 114 | 10 | 18.5 | 7.5 | 19.1 | 2.8 | 44 | 5.2 | 5 | 23.6 | 12.5 | 232 |
| GN.80555 | GN 210-40-K12-N-ZD-SR | 40 | 114 | 12 | 18.5 | 7.5 | 19.1 | 2.8 | 44 | 5.2 | 5 | 23.6 | 12.5 | 232 |
| GN.80556 | GN 210-40-K12-N-ZD-SW | 40 | 114 | 12 | 18.5 | 7.5 | 19.1 | 2.8 | 44 | 5.2 | 5 | 23.6 | 12.5 | 232 |
| GN.80611 | GN 210-50-K12-N-ZD-SR | 50 | 142 | 12 | 23 | 9 | 23.6 | 4 | 55 | 6.2 | 6 | 30.5 | 16 | 454 |
| GN.80612 | GN 210-50-K12-N-ZD-SW | 50 | 142 | 12 | 23 | 9 | 23.6 | 4 | 55 | 6.2 | 6 | 30.5 | 16 | 454 |
| GN.80615 | GN 210-50-K14-N-ZD-SR | 50 | 142 | 14 | 23 | 9 | 23.6 | 4 | 55 | 6.2 | 6 | 30.5 | 16 | 454 |
| GN.80616 | GN 210-50-K14-N-ZD-SW | 50 | 142 | 14 | 23 | 9 | 23.6 | 4 | 55 | 6.2 | 6 | 30.5 | 16 | 454 |

Conversion Table
1 mm = 0.039 inch

| d1 | |
|----|------|
| mm | inch |
| 32 | 1.25 |
| 40 | 1.56 |
| 50 | 1.95 |



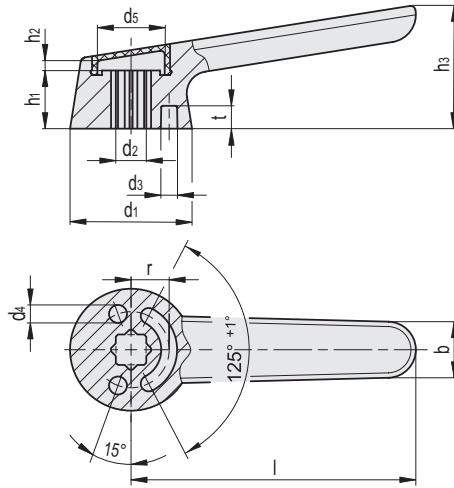
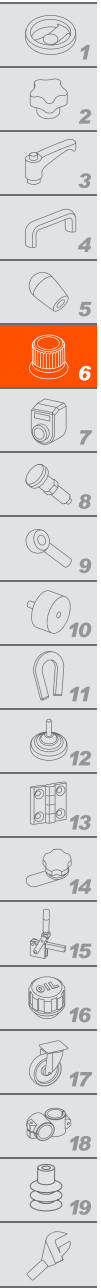
GN 210-KK

METRIC

| Code | Description | d1 | l | d2 H7 | b | t | h1 -0.2 | h2 | h3 | d3 +0.2 | d4 | d5 | r | MA max [Nm] | ⚖ |
|----------|------------------------|----|------|-------|------|-----|---------|-----|----|---------|----|------|------|-------------|-----|
| GN.80501 | GN 210-32-KK8-N-ZD-SR | 32 | 91.5 | 8 | 15 | 6 | 14.9 | 3.4 | 36 | 4.2 | 4 | 18.8 | 10 | 2.9 | 117 |
| GN.80502 | GN 210-32-KK8-N-ZD-SW | 32 | 91.5 | 8 | 15 | 6 | 14.9 | 3.4 | 36 | 4.2 | 4 | 18.8 | 10 | 2.9 | 117 |
| GN.80505 | GN 210-32-KK10-N-ZD-SR | 32 | 91.5 | 10 | 15 | 6 | 14.9 | 3.4 | 36 | 4.2 | 4 | 18.8 | 10 | 2.9 | 117 |
| GN.80506 | GN 210-32-KK10-N-ZD-SW | 32 | 91.5 | 10 | 15 | 6 | 14.9 | 3.4 | 36 | 4.2 | 4 | 18.8 | 10 | 2.9 | 117 |
| GN.80561 | GN 210-40-KK10-N-ZD-SR | 40 | 114 | 10 | 18.5 | 7.5 | 19.1 | 2.8 | 44 | 5.2 | 5 | 23.6 | 12.5 | 5.7 | 228 |
| GN.80562 | GN 210-40-KK10-N-ZD-SW | 40 | 114 | 10 | 18.5 | 7.5 | 19.1 | 2.8 | 44 | 5.2 | 5 | 23.6 | 12.5 | 5.7 | 228 |
| GN.80565 | GN 210-40-KK12-N-ZD-SR | 40 | 114 | 12 | 18.5 | 7.5 | 19.1 | 2.8 | 44 | 5.2 | 5 | 23.6 | 12.5 | 5.7 | 228 |
| GN.80566 | GN 210-40-KK12-N-ZD-SW | 40 | 114 | 12 | 18.5 | 7.5 | 19.1 | 2.8 | 44 | 5.2 | 5 | 23.6 | 12.5 | 5.7 | 228 |
| GN.80621 | GN 210-50-KK12-N-ZD-SR | 50 | 142 | 12 | 23 | 9 | 23.6 | 4 | 55 | 6.2 | 6 | 30.5 | 16 | 10 | 448 |
| GN.80622 | GN 210-50-KK12-N-ZD-SW | 50 | 142 | 12 | 23 | 9 | 23.6 | 4 | 55 | 6.2 | 6 | 30.5 | 16 | 10 | 448 |
| GN.80625 | GN 210-50-KK14-N-ZD-SR | 50 | 142 | 14 | 23 | 9 | 23.6 | 4 | 55 | 6.2 | 6 | 30.5 | 16 | 10 | 448 |
| GN.80626 | GN 210-50-KK14-N-ZD-SW | 50 | 142 | 14 | 23 | 9 | 23.6 | 4 | 55 | 6.2 | 6 | 30.5 | 16 | 10 | 448 |



Control elements



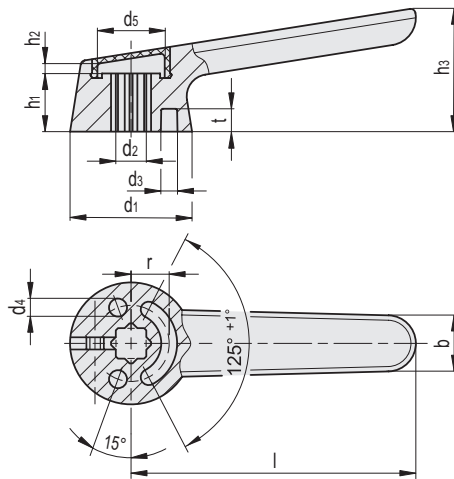
METRIC

GN 210-V

| Code | Description | d1 | l | d2 H7 | b | t | h1 -0.2 | h2 | h3 | d3 +0.2 | d4 | d5 | r | |
|----------|-----------------------|----|------|-------|------|-----|---------|-----|----|---------|----|------|------|-----|
| GN.80511 | GN 210-32-V8-N-ZD-SR | 32 | 91.5 | 8 | 15 | 6 | 14.9 | 3.4 | 36 | 4.2 | 4 | 18.8 | 10 | 117 |
| GN.80512 | GN 210-32-V8-N-ZD-SW | 32 | 91.5 | 8 | 15 | 6 | 14.9 | 3.4 | 36 | 4.2 | 4 | 18.8 | 10 | 117 |
| GN.80515 | GN 210-32-V10-N-ZD-SR | 32 | 91.5 | 10 | 15 | 6 | 14.9 | 3.4 | 36 | 4.2 | 4 | 18.8 | 10 | 117 |
| GN.80516 | GN 210-32-V10-N-ZD-SW | 32 | 91.5 | 10 | 15 | 6 | 14.9 | 3.4 | 36 | 4.2 | 4 | 18.8 | 10 | 117 |
| GN.80571 | GN 210-40-V10-N-ZD-SR | 40 | 114 | 10 | 18.5 | 7.5 | 19.1 | 2.8 | 44 | 5.2 | 5 | 23.6 | 12.5 | 228 |
| GN.80572 | GN 210-40-V10-N-ZD-SW | 40 | 114 | 10 | 18.5 | 7.5 | 19.1 | 2.8 | 44 | 5.2 | 5 | 23.6 | 12.5 | 228 |
| GN.80575 | GN 210-40-V12-N-ZD-SR | 40 | 114 | 12 | 18.5 | 7.5 | 19.1 | 2.8 | 44 | 5.2 | 5 | 23.6 | 12.5 | 228 |
| GN.80576 | GN 210-40-V12-N-ZD-SW | 40 | 114 | 12 | 18.5 | 7.5 | 19.1 | 2.8 | 44 | 5.2 | 5 | 23.6 | 12.5 | 228 |
| GN.80631 | GN 210-50-V12-N-ZD-SR | 50 | 142 | 12 | 23 | 9 | 23.6 | 4 | 55 | 6.2 | 6 | 30.5 | 16 | 447 |
| GN.80632 | GN 210-50-V12-N-ZD-SW | 50 | 142 | 12 | 23 | 9 | 23.6 | 4 | 55 | 6.2 | 6 | 30.5 | 16 | 447 |
| GN.80635 | GN 210-50-V14-N-ZD-SR | 50 | 142 | 14 | 23 | 9 | 23.6 | 4 | 55 | 6.2 | 6 | 30.5 | 16 | 447 |
| GN.80636 | GN 210-50-V14-N-ZD-SW | 50 | 142 | 14 | 23 | 9 | 23.6 | 4 | 55 | 6.2 | 6 | 30.5 | 16 | 447 |

Conversion Table
1 mm = 0.039 inch

| d1 | |
|----|------|
| mm | inch |
| 32 | 1.25 |
| 40 | 1.56 |
| 50 | 1.95 |



METRIC

GN 210-VK

| Code | Description | d1 | l | d2 H7 | b | t | h1 -0.2 | h2 | h3 | d3 +0.2 | d4 | d5 | r | MA max [Nm] | |
|----------|------------------------|----|------|-------|------|-----|---------|-----|----|---------|----|------|------|-------------|-----|
| GN.80521 | GN 210-32-VK8-N-ZD-SR | 32 | 91.5 | 8 | 15 | 6 | 14.9 | 3.4 | 36 | 4.2 | 4 | 18.8 | 10 | 2.9 | 115 |
| GN.80522 | GN 210-32-VK8-N-ZD-SW | 32 | 91.5 | 8 | 15 | 6 | 14.9 | 3.4 | 36 | 4.2 | 4 | 18.8 | 10 | 2.9 | 115 |
| GN.80525 | GN 210-32-VK10-N-ZD-SR | 32 | 91.5 | 10 | 15 | 6 | 14.9 | 3.4 | 36 | 4.2 | 4 | 18.8 | 10 | 2.9 | 115 |
| GN.80526 | GN 210-32-VK10-N-ZD-SW | 32 | 91.5 | 10 | 15 | 6 | 14.9 | 3.4 | 36 | 4.2 | 4 | 18.8 | 10 | 2.9 | 115 |
| GN.80581 | GN 210-40-VK10-N-ZD-SR | 40 | 114 | 10 | 18.5 | 7.5 | 19.1 | 2.8 | 44 | 5.2 | 5 | 23.6 | 12.5 | 5.7 | 225 |
| GN.80582 | GN 210-40-VK10-N-ZD-SW | 40 | 114 | 10 | 18.5 | 7.5 | 19.1 | 2.8 | 44 | 5.2 | 5 | 23.6 | 12.5 | 5.7 | 225 |
| GN.80585 | GN 210-40-VK12-N-ZD-SR | 40 | 114 | 12 | 18.5 | 7.5 | 19.1 | 2.8 | 44 | 5.2 | 5 | 23.6 | 12.5 | 5.7 | 225 |
| GN.80586 | GN 210-40-VK12-N-ZD-SW | 40 | 114 | 12 | 18.5 | 7.5 | 19.1 | 2.8 | 44 | 5.2 | 5 | 23.6 | 12.5 | 5.7 | 225 |
| GN.80641 | GN 210-50-VK12-N-ZD-SR | 50 | 142 | 12 | 23 | 9 | 23.6 | 4 | 55 | 6.2 | 6 | 30.5 | 16 | 10 | 442 |
| GN.80642 | GN 210-50-VK12-N-ZD-SW | 50 | 142 | 12 | 23 | 9 | 23.6 | 4 | 55 | 6.2 | 6 | 30.5 | 16 | 10 | 442 |
| GN.80645 | GN 210-50-VK14-N-ZD-SR | 50 | 142 | 14 | 23 | 9 | 23.6 | 4 | 55 | 6.2 | 6 | 30.5 | 16 | 10 | 442 |
| GN.80646 | GN 210-50-VK14-N-ZD-SW | 50 | 142 | 14 | 23 | 9 | 23.6 | 4 | 55 | 6.2 | 6 | 30.5 | 16 | 10 | 442 |

Control elements